

San Ramon Valley Unified School District

SRVUSD PLANNING TEAM

MEETING #01: IF YOU COULD DREAM

FEBRUARY 6, 2023



your integrated planning team!



Kate Mraw
Director of K-12
Principal



Maria Madrigal
Project Manager

primary-point-of-contact



Mariana Lavezzo
Director of School Planning
Project Leader



Andrea Pippin
Educational Planner
& Community Outreach Liaison

primary-point-of-contact



Erik Piller
Facilities Condition Assessments
Bureau Veritas



Ryan Craven
Cost Estimator
HLCM



Jeremy Carver
Food Service Consultant
Ricca Design Studios



Lorrie Ruiz
Funding Analysis
CL Consulting



AGENDA: IF YOU COULD DREAM

- Process, Groups & Schedule Overview
- Facility Condition Assessment & Site Ratings
- Data Visualization for Well-informed Decisions
- Educational Vision Engagement Findings WIP

ENGAGEMENT EXERCISES ON MURAL.CO

- Draft Community Survey Review for Input
- Community Asset Mapping
- Open Discussion

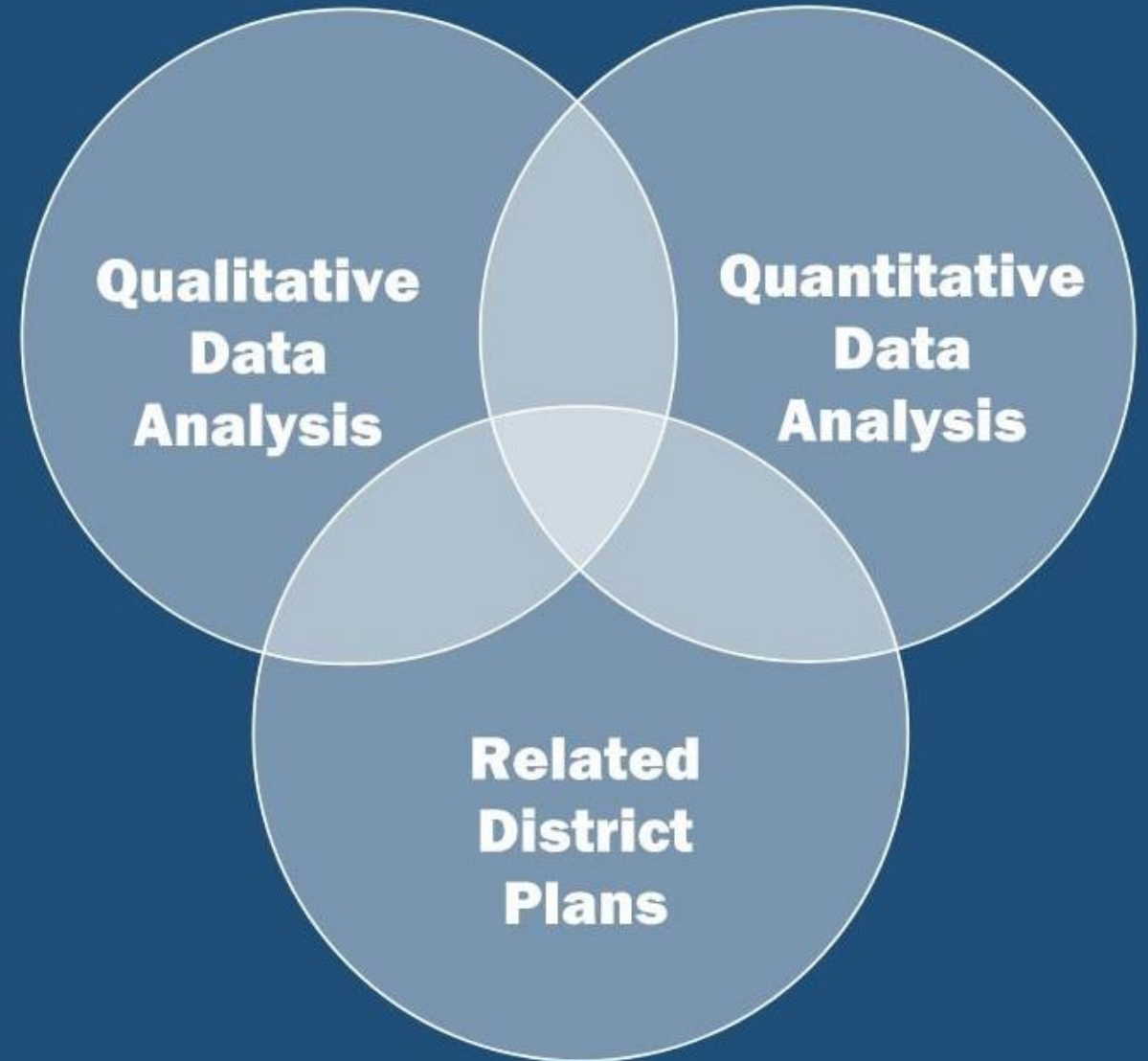


Groups & Schedule Overview

LONG RANGE DEVELOPMENT PLAN: PROCESS

LONG RANGE DEVELOPMENT PLAN

STRATEGIC FRAMEWORK



SCOPE CATEGORIES



Data Collection and Facility Assessments

- Analyze Data (Discovery)
- Site Visits/Assessments
- Costs of Immediate Needs



Capacity and Funding Analysis

- Study Existing and Projected Enrollments
- Determine Ideal Capacities Per Campus
- Financial Analysis and Alignment with Funding



Visioning: Educational Specifications

- District's Vision & Focus Groups
- Types of Spaces and Uses, Adjacencies,
- Description of Components



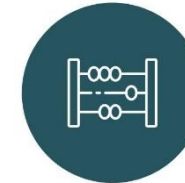
Community Outreach

- Community Survey
- FMP Committee Workshops
- Town Halls



Child Nutrition Plan

- Kitchen and Serving Prototypes by School Type
- Infrastructure Requirement Prototypes
- Central Kitchen and Warehouse Study



Universal TK Analysis

- Current TK Utilization and Code Compliance Analysis
- Approach to TK Alignment with Ed Specs
- TK Capacity Analysis Using Enrollment Projections



Cost Estimate and Dashboard Preparation

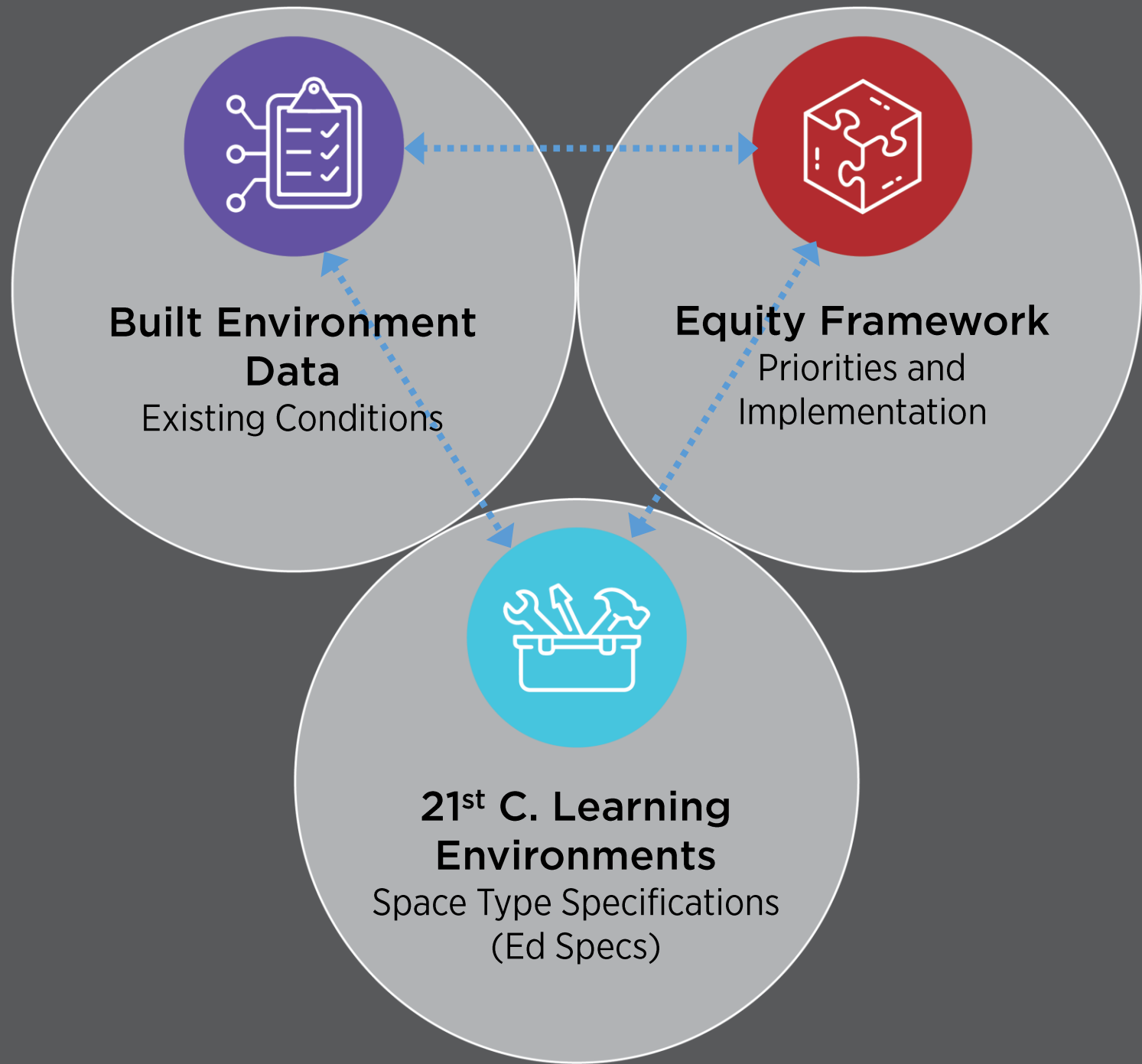
- Integrate Costs with the Long-Term Vision
- Scope of Work Categories
- Implementation Scenario Tools



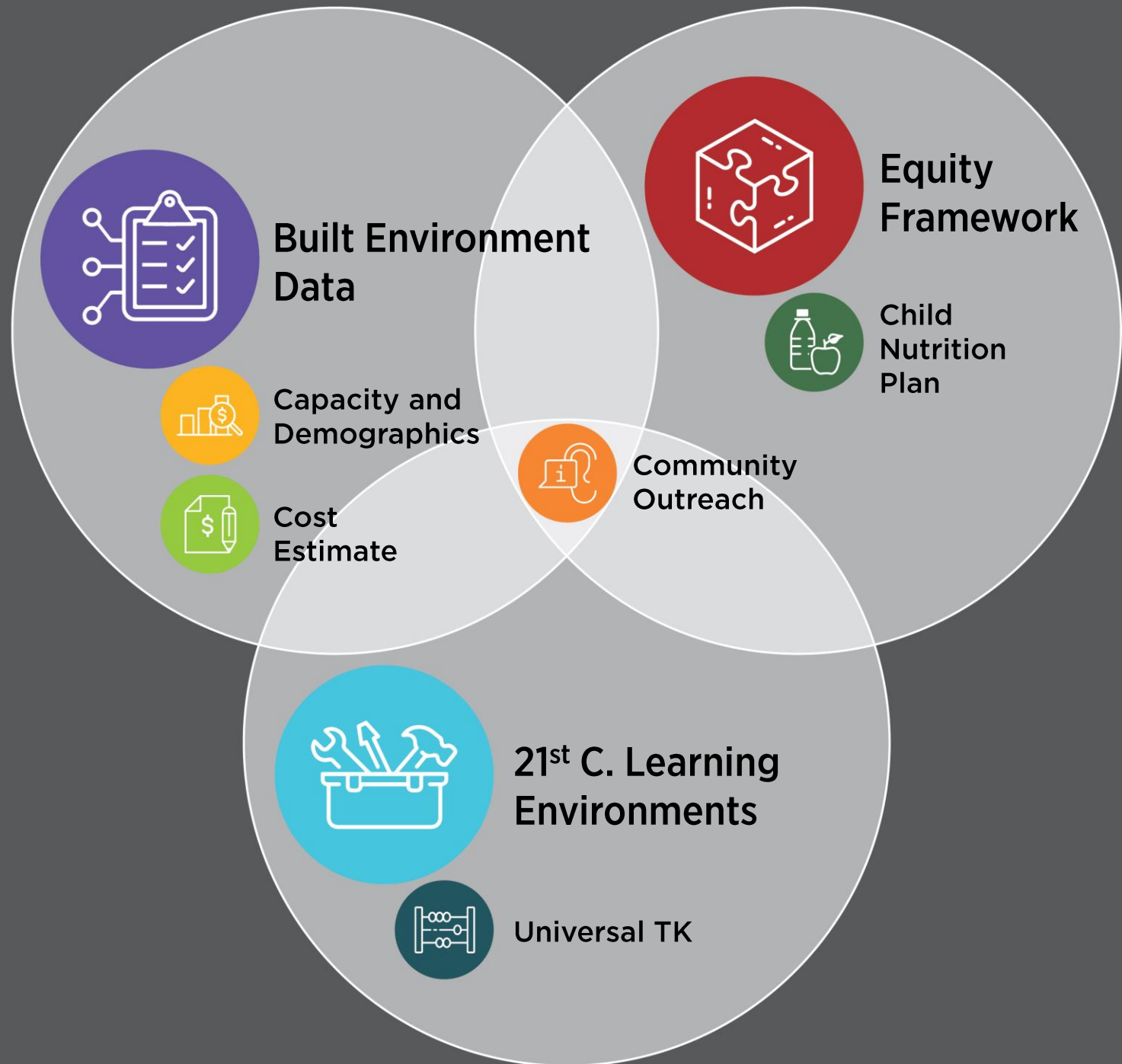
Long Term Site Planning and Prioritization

- Overlay Findings to Create Districtwide Equity
- Establish Priority Projects Tied to Funding
- Interactive Website Deliverable

**DATA -DRIVEN AND
SYNERGISTIC**

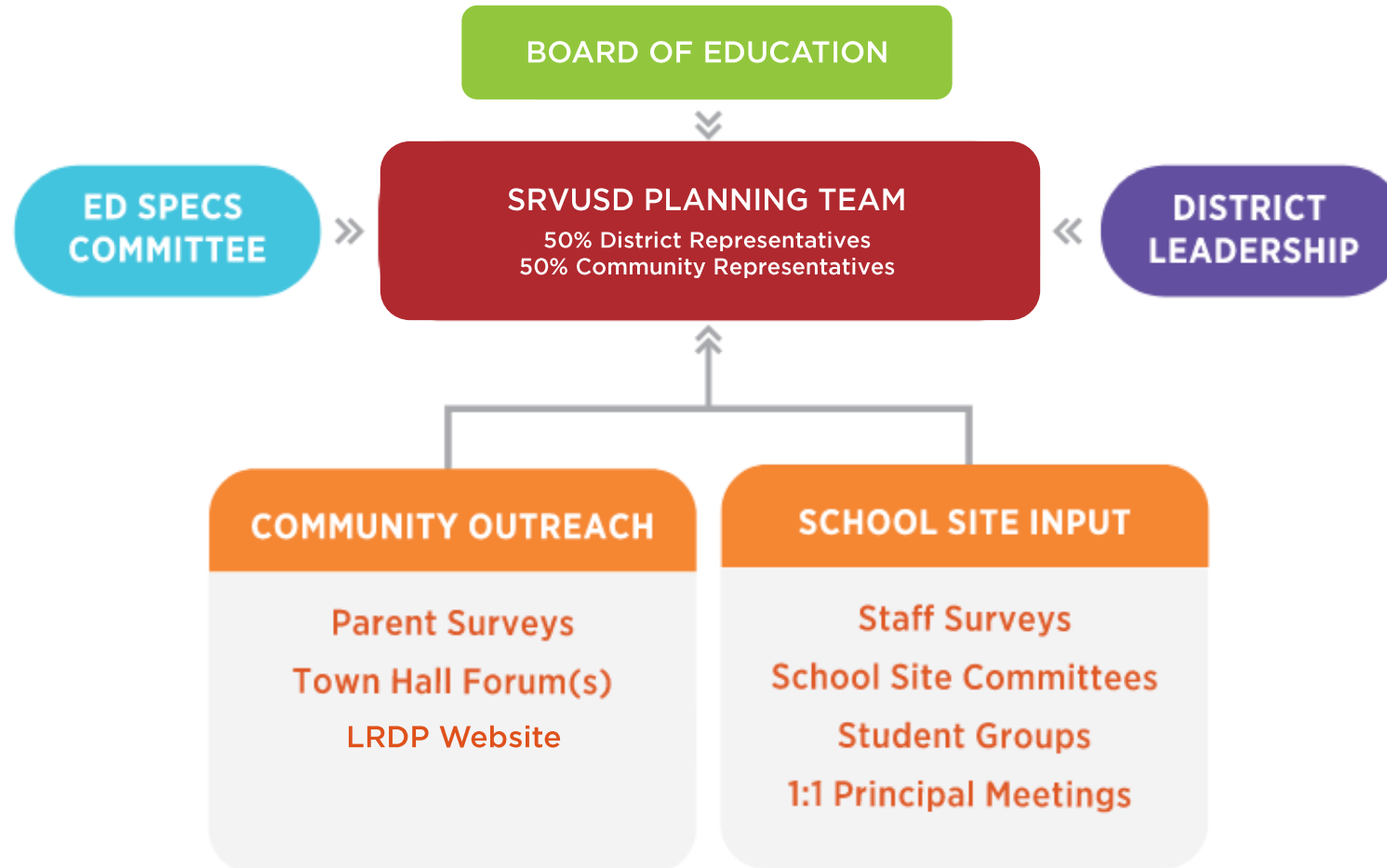


DATA-DRIVEN AND PEOPLE ORIENTED





LRDP GROUP FRAMEWORK: WORKING HOLISTICALLY



SRVUSD PLANNING TEAM SCHEDULE: NOVEMBER 2022 – OCTOBER 2023

Meeting #1

February 6
Mon 5:45-7:45
Virtual

“If You Could Dream”

Long Range Development Plan Process & Schedule
Draft Community Survey Review for Input
Draft Guiding Principles
Community Asset Mapping

Meeting #2

March 20
Mon 5:45-7:45
Virtual

School Site Findings

Facility Condition Assessment Findings
Ed Specs Focus Group Findings
Campus Visioning Workshop Emerging Patterns
Engagement Activity Challenges & Strategies

Meeting #3

April 20
Thurs 5:30-7:30
PDC – in person

District Vision

Community Engagement Survey Results
Demographic Trends & Capacity Analysis
“Pre-Town Hall” Exercise

Meeting #4

May 23
Tues 5:30-7:30
Virtual

Community Forums Debrief

Final Site Plan Diagrams
Final Ed Specs
Community Engagement Survey Results Update

Meeting #5

Sept 7
Thurs 5:30-7:30
PDC – in person

Project Prioritization

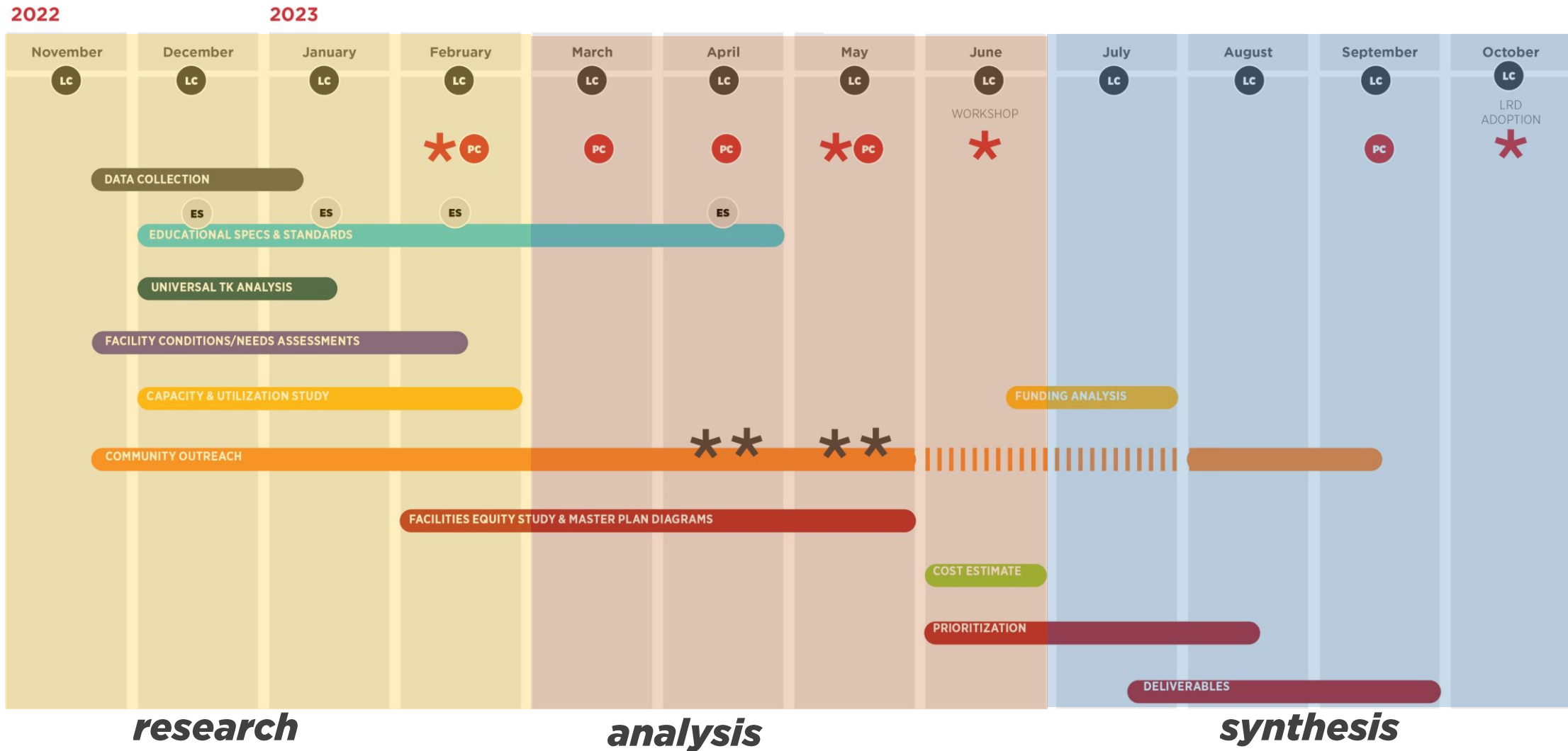
Total Program Cost & Potential Funding Sources
Stakeholder Groups Priorities
SRVUSD Planning Team Prioritization Activity



SCHEDULE: NOVEMBER 2022 – OCTOBER 2023

LEGEND:

- PC SRVUSD Planning Committee
- LC Leadership Committee (District Level)
- ES Ed-Specs Committee
- ✱ Town Hall
- ✱ Board of Education
- ◆ Milestones noted in scope



Facility Condition Assessments

NEEDS ASSESSMENTS

FACILITIES ASSESSMENT



01

PRE-SURVEY

- PRE-SURVEY QUESTIONNAIRE
- REVIEW EXISTING DATA
- KICK OFF MEETING
- SCHEDULING

02

PILOT

- CONDUCT SITE ASSESSMENT(S)
- SAMPLE REPORT
- DRAFT APPROVAL

03

ASSESSMENT

- BUILDING SYSTEM INSPECTIONS
- IDENTIFICATION OF DEFICIENCIES
- INVENTORY OF ASSETS
- REPAIR / REPLACE RECOMMENDATIONS
- COST ESTIMATING / MAINTENANCE PLAN

04

DELIVERABLE

- FACILITY ASSESSMENTS
- CAPITAL PLANNING REPORTS
- PORTFOLIO PRIORITIZATION
- FACILITY CONDITION INDEX (FCI)
- OPT: CMMS INTEGRATION

FACILITY CONDITION RATINGS: CATEGORIES EXAMPLE



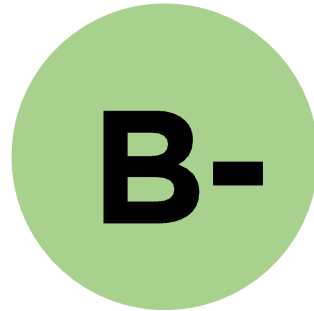
1. Building Envelope and Structure
2. Building Interiors
3. Building Systems and Utilities
4. Equipment and Furnishings
5. Site Improvements
6. Special Construction and Demo

XYZ School				
Building Area = 40,220 SF				
FTA Primary Level	Cost / SF	Primary System Replacement Cost	Condition Rating	System Replacement Cost x Condition Rating
Substructure	\$21.52	\$865,478	3.76	\$3,257,859
Shell	\$31.85	\$1,281,072	2.56	\$3,274,710
Interiors	\$24.07	\$967,906	3.02	\$2,920,483
Conveyance	\$0.52	\$20,978	1.00	\$20,978
Plumbing	\$17.91	\$720,471	3.08	\$2,221,632
HVAC	\$6.07	\$244,332	3.04	\$742,745
Fire Protection	\$0.18	\$7,404	3.00	\$22,212
Electrical	\$21.03	\$845,808	3.19	\$2,697,845
Equipment	\$1.90	\$76,594	3.21	\$246,195
Site	\$12.39	\$498,228	3.68	\$1,831,441
Total Building	\$137.45	\$5,528,272	Subtotal	\$17,236,100
Building Weighted Average Condition			3.12	
Rounded			3	
<p>Building Weighted Average Condition equals the Sum of the individual Primary System Replacement Costs multiplied by the Condition Ratings then divided by the Sum of the Primary System Replacement Costs.</p> <p>The Primary System Replacement Costs are calculated by totaling the secondary level system costs for each Primary System. The cost calculations are included in Appendix D.</p>				

FACILITY CONDITION RATINGS: REPORT CARD GRADES EXAMPLE



XYZ Elementary School's
Condition Rating:



Condition Rating

Grade Equivalent

4.1 - 5



A

3.1 - 4



B

2.1 - 3



C

1.1 - 2



D

0 - 1



F

New	New or very close to new Recently installed Sound and functioning	A+
Good	Satisfactory as is Typically within the first third of its life cycle Sound and functioning Minor signs of wear and tear	B
Fair	Satisfactory as is Near the median of its useful life Adequately functioning Signs of wear, deferred maintenance, previous repairs	C
Poor	Significantly aged Near the end of useful life Functions unreliably Condition could contribute to deterioration of related elements	D
Failed	Function has ceased Replacement or repair is required	F
Not Applicable	Component is not present	N/A



OTHER RATING FACTORS: WOODLAND JUSD EXAMPLE

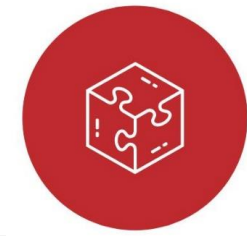
A	2001 - 2022
B	1979 - 2000
C	1957 - 1978
D	1935 - 1956
F	1912 - 1934

School	Date Constructed	Age Rating
Beamer ES	1950	D
Dingle ES	1940	D
Freeman ES	1985	B
Gibson ES	1953	D
Maxwell ES	1970	C
Plainfield ES	1949	D
Sci Tech Charter	1940	D
Spring Lake ES	2022	A
Tafoya ES	1999	B
Whitehead ES	1980	B
Prairie ES	1988	B
Zamora ES	1985	B
Douglass MS	1912	F
Lee MS	1952	D
Cache Creek HS	1929	F
Pioneer HS	2003	A
Woodland HS	1969	C
Adult Ed	1912	F

Power BI Data Visualization

DASHBOARDS FOR WELL-INFORMED DECISIONS

SITE RATINGS: WOODLAND JUSD SAMPLE



Site Rating Analysis

Click on the sites below to analyze the factors that impact the site rating. CTRL + click to view multiple ratings simultaneously.

9,834

Total Current Enrollment

23%

English Learners

14.9%

Special Education

26%

Percentage of CR's in Portables

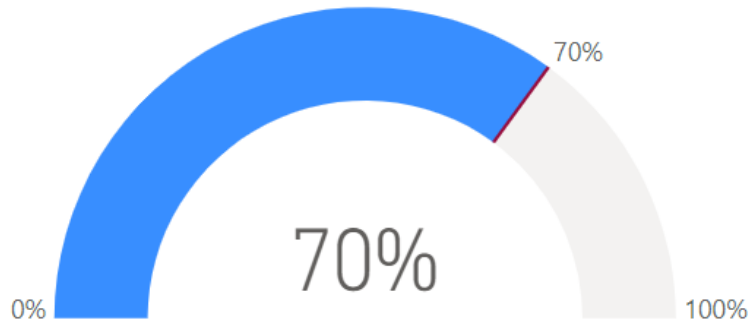
0.44%

Foster Youth

1,988

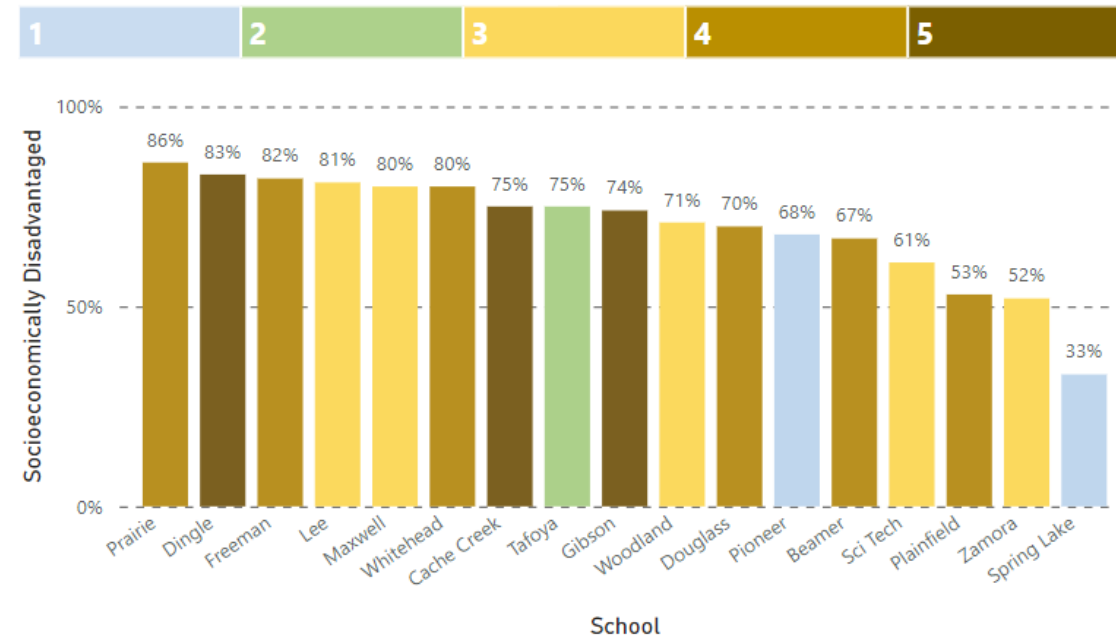
Number of students in portables

Avg. Socio-Economically Disadvantaged



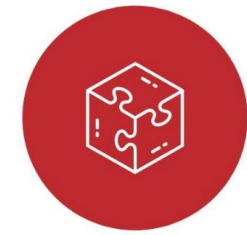
Socio-Economically Disadvantaged

Reset filters



School Name	Site Rating	Total Current Enrollment	Students in Portables	English Learners	Sum of Foster Youth	Special Education
Adult Ed	2	350	33%			
Beamer	4	508	50%	41%	0.20%	12.1%
Cache Creek	5	126	40%	11%	0.79%	19.8%
Dingle	5	325	47%	41%	0.00%	13.6%
Douglass	4	815	8%	19%	0.37%	11.8%
Freeman	4	441	55%	30%	1.11%	22.9%
Gibson	5	415	25%	21%	1.35%	18.9%
Lee	3	599	12%	18%	0.34%	16.0%
Maxwell	2	386	19%	20%	0.26%	16.3%
Total		9,834	26%	23%	7.42%	14.9%

SITE RATINGS: WOODLAND JUSD SAMPLE



Compare

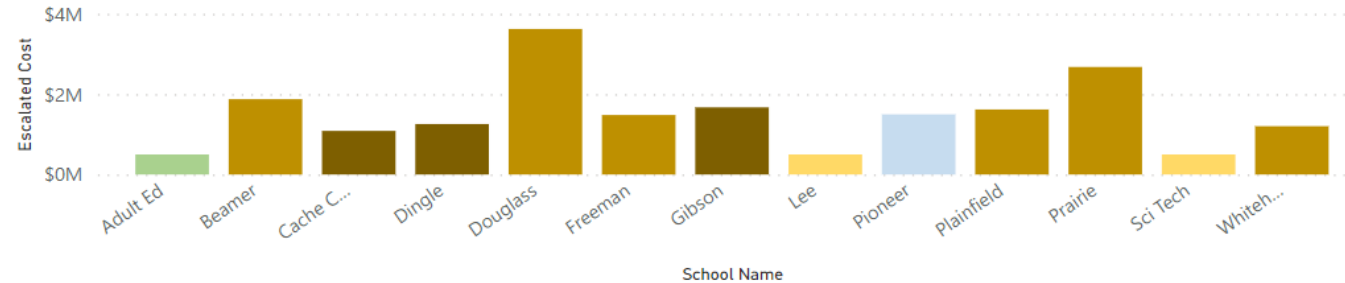
24.1M

Total Cost

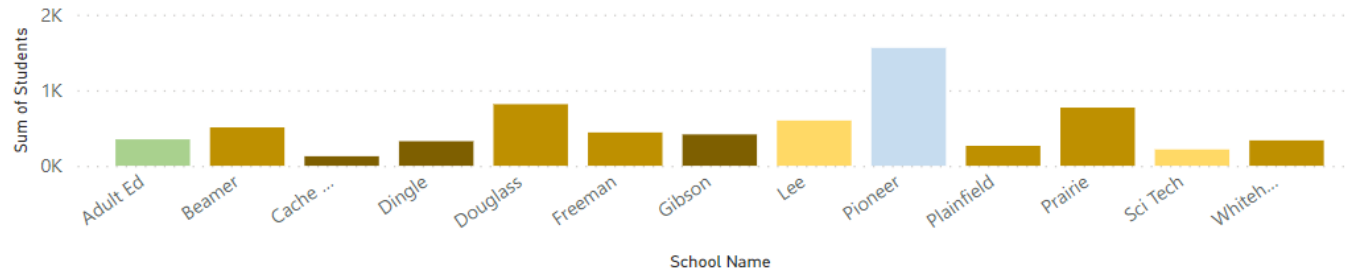
Total Cost Budget Info:

- Default Immediate Needs: \$4,600,000
- Green: <= \$30,000,000 Yellow: <= \$44,000,000 Red: Overbudget

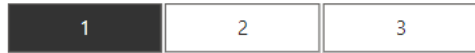
Cost by School Name



Impact on Students by School Name



Board Priority



Reset filters

Site Rating



Escalation Years



Projects by Site Rating

Site Rating	Classroom Modernization	Lunch Shelter (select sites)	Total
1		\$1,497,140.82	\$1,497,140.82
2		\$499,046.94	\$499,046.94
3		\$998,093.88	\$998,093.88
4	\$10,481,165.52	\$1,996,187.76	\$12,477,353.28
5	\$3,514,564.62	\$499,046.94	\$4,013,611.56
Total	\$13,995,730.14	\$5,489,516.34	\$19,485,246.48

Ed Specs Visioning Workshop & Focus Groups

EDUCATIONAL VISIONING WIP

WHY DO WE NEED ED SPECS?



- Translate the educational goals into physical space recommendations and requirements, keeping in mind most scope will be modernizations
- Establish District-wide parity
- Support under-served students and their communities
- Support the learners and educators they serve and the learning activities that will occur within the spaces.
- Empower design teams to find creative solutions
- Potential cost savings
- Beta test innovative educational planning concepts



WHAT DOES AN ED SPEC INCLUDE?

Information includes ideal school size, grade configuration, guidelines for safety and security, circulation, sustainability and community use.



Supporting Learning Activities

- Individual Learning
- Collaboration
- Special Education
- Hands-On
- Reading
- Making and STEM
- Play



Physical Environment

- Primary Space
- Ancillary Support Spaces
- Circulation
- Outdoor Environments
- SF Requirements
- Adjacency Recommendations



Qualities and Features

- Surface Finishes
- Writable, Tackable
- Technology
- Durability
- Sustainability
- Transparency
- Acoustics



Elements of the Space

- Furniture
- Equipment
- Lighting
- Ventilation
- Materials



San Ramon Valley Unified School District Strategic Directions

Built on a foundation of academic excellence, we are broadening our definition of success. **Success** means our teams create and nurture:

Equity



We will ensure all students are empowered to reach their full potential by valuing student voice, addressing systemic inequities, and closing opportunity gaps.

Social Emotional Well-Being



We are committed to creating and nurturing inclusive learning environments where all students, staff, and families feel deeply connected to their school community.

Deep Learning and Innovation



We will create learning environments that empower students to own their learning so they find purpose, meaning, and joy in their education and excel in post-high school endeavors.

Shared Leadership



We will create the conditions for shared leadership by building a culture of trust, collegiality, and shared responsibility with students, staff, and families.

Stewardship of Resources



We will maximize resources including time, talent and finances, to advance our student success goals.

Culture of Responsiveness



We will effectively serve all stakeholders by listening, responding promptly, changing practices when appropriate, and communicating the rationale for decisions so students remain the focus of our efforts.

SRVUSD... Dedicated to academic excellence where all students thrive and succeed in innovative and inclusive learning environments.

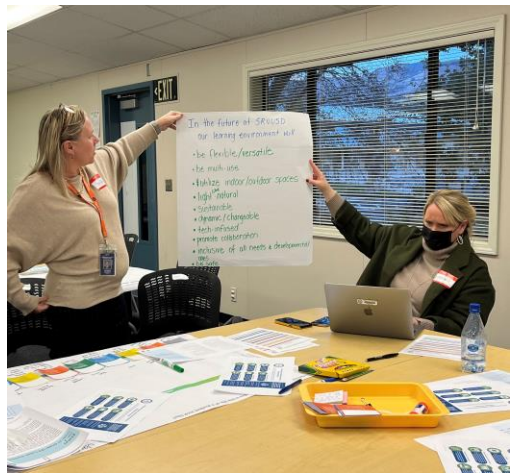
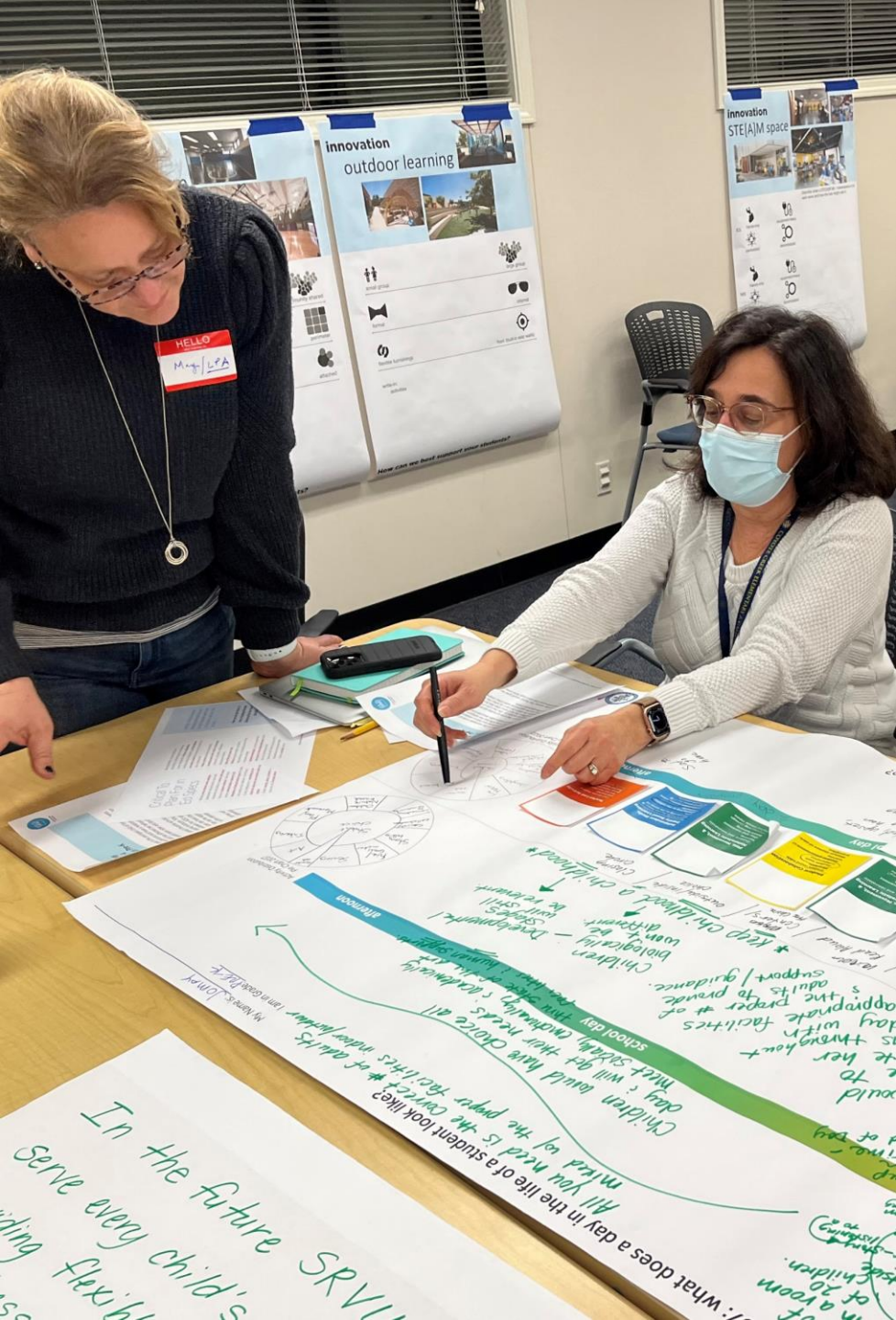


Success means our students:

- Achieve academically
- Experience social and emotional well-being
- Develop curiosity, confidence and independence as learners
- Appreciate the importance of teams and collaboration
- Demonstrate empathy and compassion
- Determine their purpose and understand the importance of service
- Set and achieve goals
- Love learning

Translating the Strategic Directions into the Built Environment

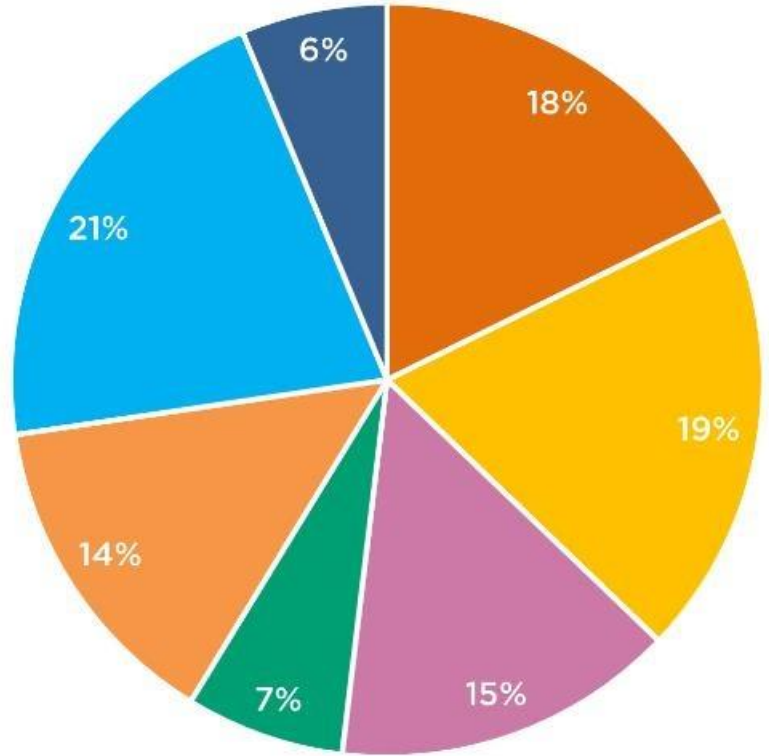
At the kickoff Ed Specs Visioning Workshop, participants were asked to think how the built environment could better support the Strategic Directions.



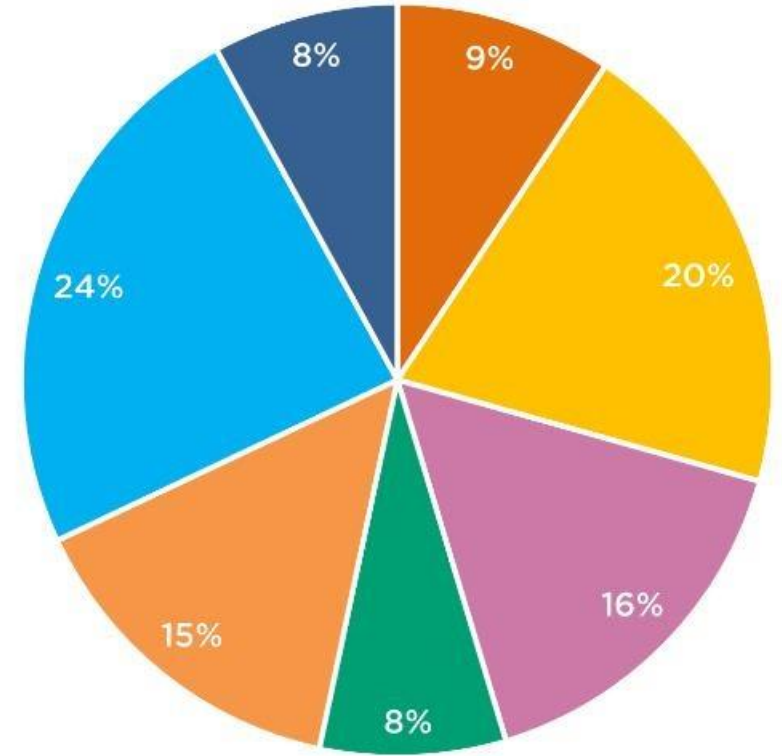
Learning Shifts Envisioned

- Teacher Led Activity (Lecture Based)
- Student Collaboration
- Art-Based and Design Thinking
- Play, Movement, and Naturalistic Learning
- Tinkering and Making, Virtual and Blended Learning
- Independent Study, Inquiry Based Learning
- Teacher Interdisciplinary Collaboration

2022 Learning Activities



2037 Learning Activities



4

Future Learning Environment

This is the first draft the LPA team took a stab at by merging together the draft statements each small group made at the Ed Specs Visioning Workshop.

Ed Specs Guiding Principles - Draft v1



To nurture and educate the whole student, SRVUSD's community will empower agency, a sense of connection and real-life application in student-centric learning environments that will:

- be flexible to support multiple learning styles simultaneously
- empower learners to choose high energy or calm reflection spaces
- promote collaboration and teamwork
- support applied and experiential learning (CTE)
- meet all learners' sensory needs
- support mental and physical wellness
- optimize the outdoors
- support sustainability

21st C LEARNING: HIGHLIGHTS OF BIG PICTURE COMMENTS THUS FAR



- Build a new high school because two of our high schools are overcrowded?
- Offer the same CTE programs at all high schools
- Improve the student dining experience: multiple and more-efficient food access points; age-appropriate design
- Provide spaces like a Library that students can utilize before and after school for group projects or individual work
- Take advantage of Prop 28 for the Arts to make the programs more consistent

21st C LEARNING: HIGHLIGHTS OF DETAILED COMMENTS THUS FAR



- Innovative spaces for teachers and students for easy collaboration
- Spaces geared toward different learning styles and sensory needs
- Well-equipped technology media centers and resources
- Age-appropriate modular furniture designed to enhance collaboration
- Appropriate indoor and outdoor space supporting connecting with nature
- Providing enough spaces for storage and various activities

EDUCATIONAL VISIONING



11 Educator Focus Groups
+
STUDENT FOCUS GROUP

Focus Group Interview Topics

1. SEL and Well-being
2. Safety and Security
3. Supporting Students with Special Needs K-12
4. Early Childhood and Outdoor Learning
5. Media Resources K-12
6. Arts K-12
7. Experiential and Applied Learning (CTE Programs)
8. Leveraging Technology K-12
9. Fitness and Athletics K-12
10. Dining Experience and Child Nutrition Services
11. Community Connections

Draft Community Survey Review + Defining FMP Success

ENGAGEMENT EXERCISES ON MURAL.CO

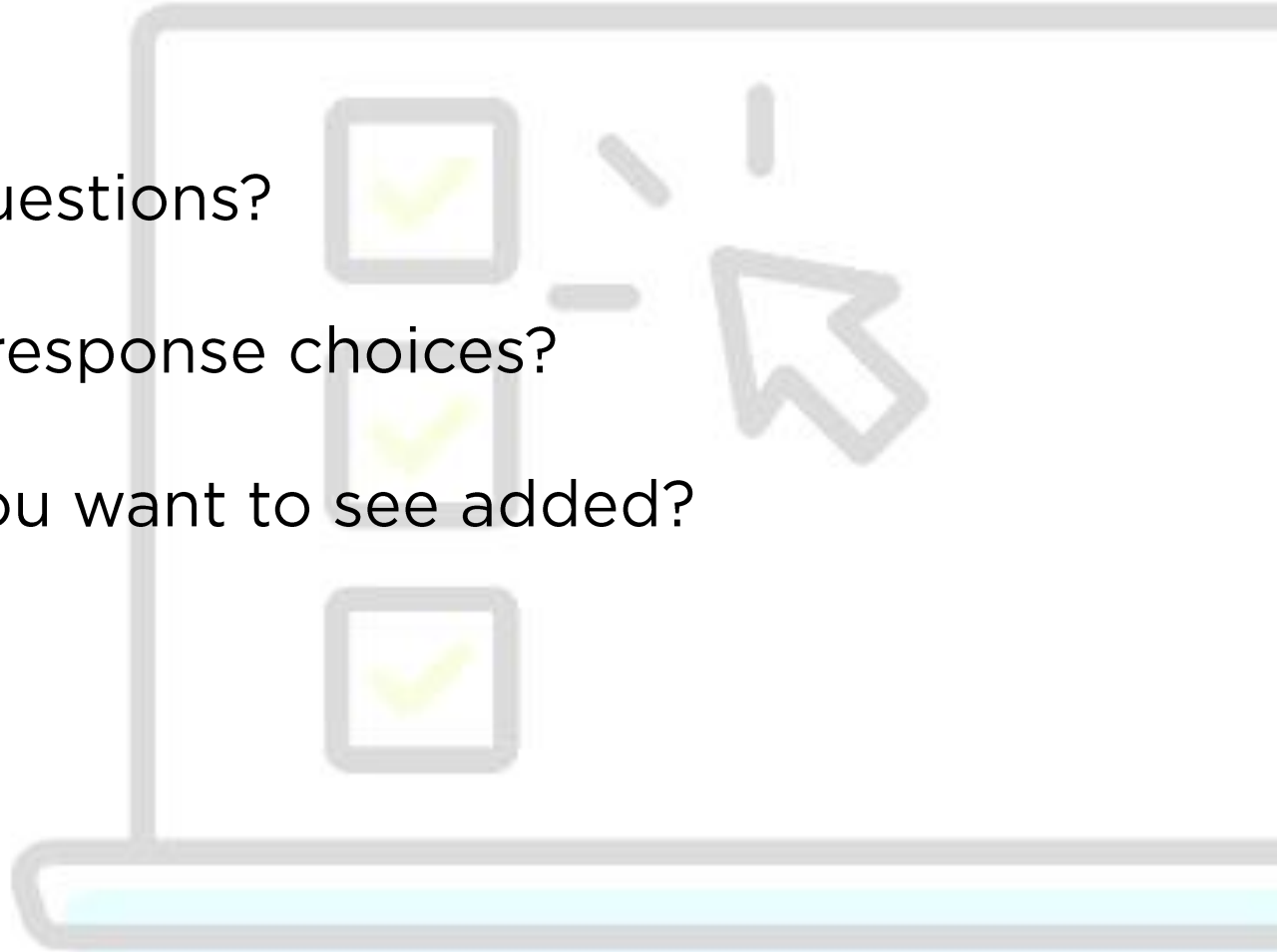
COMMUNITY AND STUDENT SURVEY INPUT



Are we asking the right questions?

Are we offering the right response choices?

Which questions would you want to see added?



NEXT STEPS

Meeting #1

February 6
Mon 5:45-7:45
Virtual

“If You Could Dream”

FMP Process & Schedule Overview
Draft Community Survey Review for Input
Draft Guiding Principles
Community Asset Mapping

Meeting #2

March 20
Mon 5:45-7:45
Virtual

School Site Findings

Facility Condition Assessment Findings
Ed Specs Focus Group Findings
Campus Visioning Workshop Emerging Patterns
Engagement Activity Challenges & Strategies

Meeting #3

April 20
Thurs 5:30-7:30
PDC - in person

District Vision

Community Engagement Survey Results
Demographic Trends & Capacity Analysis
“Pre-Town Hall” Exercise

Meeting #4

May 23
Tues 5:30-7:30
Virtual

Community Forums Debrief

Final Site Plan Diagrams
Final Ed Specs
Community Engagement Survey Results Update

Meeting #5

Sept 7
Thurs 5:30-7:30
PDC - in person

Project Prioritization

Total Program Cost & Potential Funding Sources
Stakeholder Groups Priorities
SRVUSD Planning Team Prioritization Activity





Changing Lives by Design™