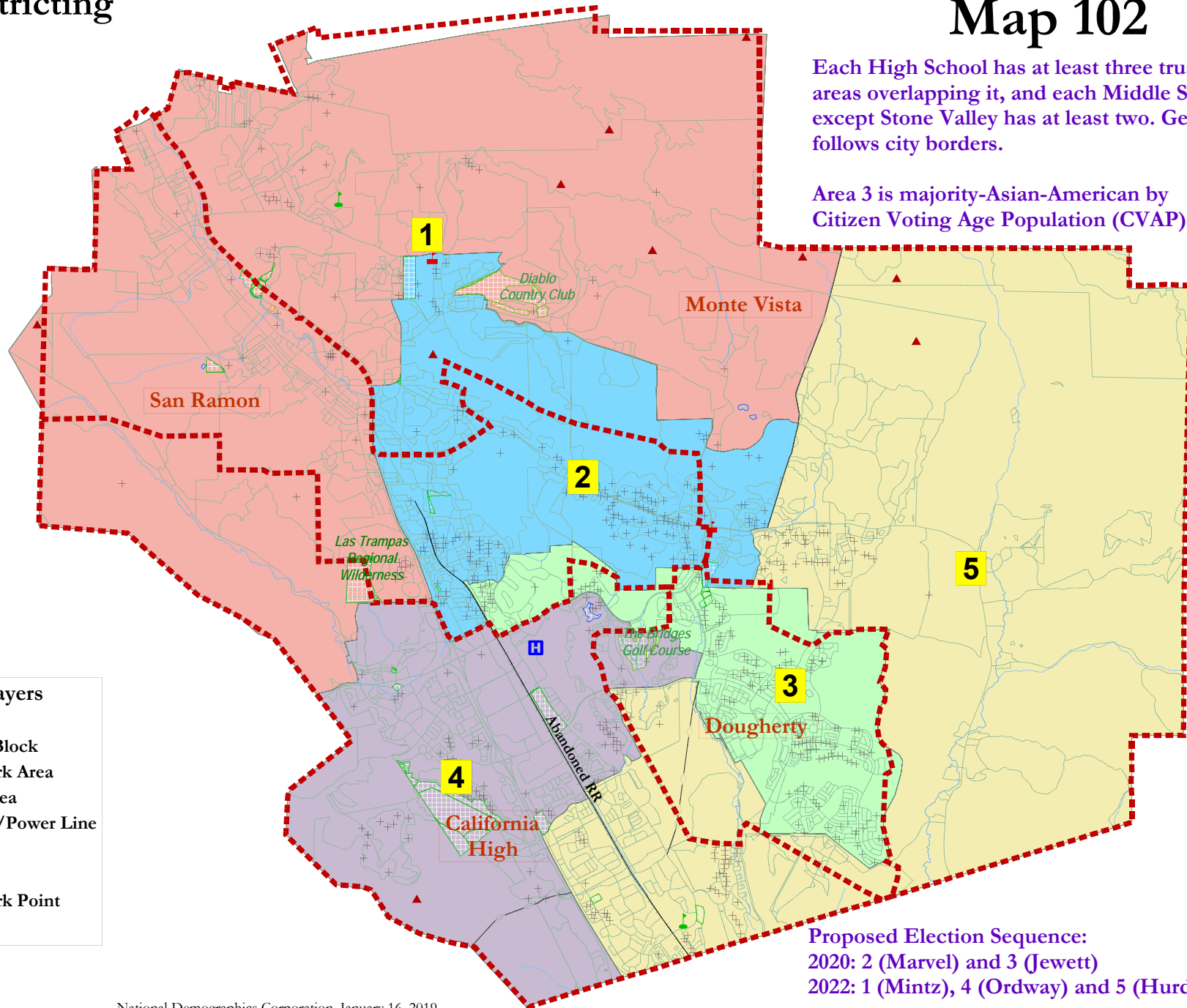


# San Ramon Unified 2019 Districting

## Map 102

Each High School has at least three trustee areas overlapping it, and each Middle School except Stone Valley has at least two. Generally follows city borders.

Area 3 is majority-Asian-American by Citizen Voting Age Population (CVAP).



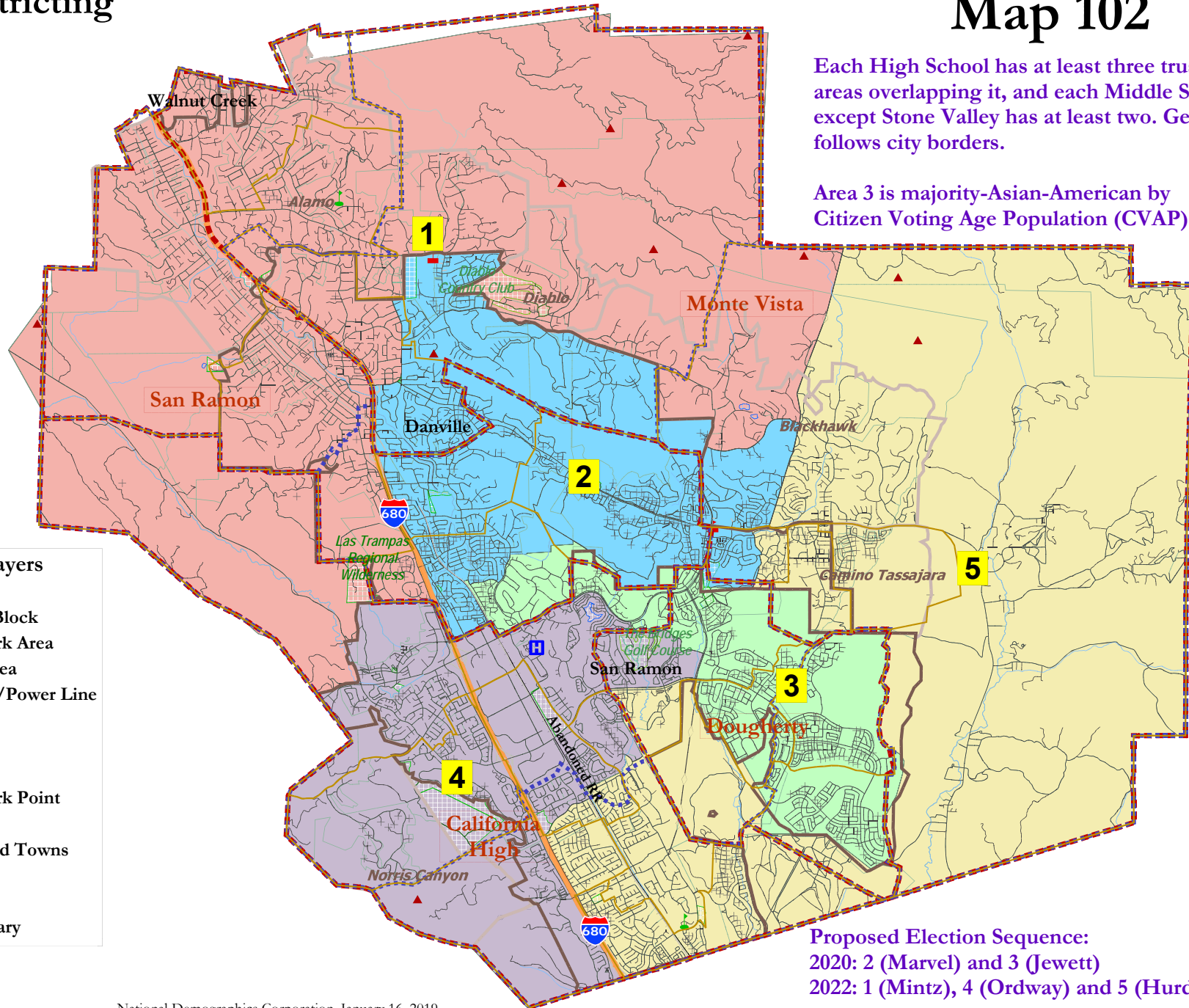
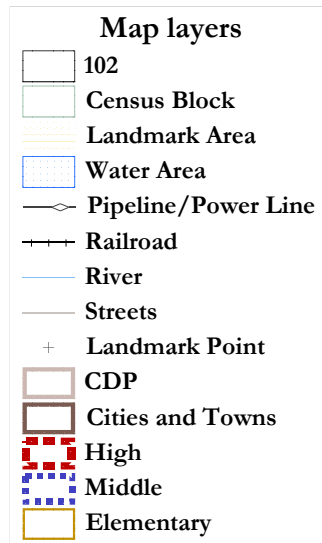
Proposed Election Sequence:  
2020: 2 (Marvel) and 3 (Jewett)  
2022: 1 (Mintz), 4 (Ordway) and 5 (Hurd)

# San Ramon Unified 2019 Districting

## Map 102

Each High School has at least three trustee areas overlapping it, and each Middle School except Stone Valley has at least two. Generally follows city borders.

Area 3 is majority-Asian-American by Citizen Voting Age Population (CVAP).



**Proposed Election Sequence:**  
 2020: 2 (Marvel) and 3 (Jewett)  
 2022: 1 (Mintz), 4 (Ordway) and 5 (Hurd)

San Ramon Unified - Draft Map 102							
District		1	2	3	4	5	Total
Ideal	Total Pop	28,981	28,800	28,293	29,104	28,207	143,385
28,677	Deviation from ideal	304	123	-384	427	-470	897
	% Deviation	1.06%	0.43%	-1.34%	1.49%	-1.64%	3.13%
Total Pop	% Hisp	6%	7%	6%	9%	9%	7%
	% NH White	82%	77%	33%	57%	62%	62%
	% NH Black	1%	1%	3%	3%	2%	2%
	% Asian-American	10%	14%	55%	29%	25%	26%
Citizen Voting Age Pop	Total	21,627	20,101	17,071	18,707	18,052	95,558
	% Hisp	6%	5%	6%	7%	10%	7%
	% NH White	85%	80%	39%	61%	65%	67%
	% NH Black	1%	1%	3%	3%	3%	2%
	% Asian/Pac.Isl.	7%	14%	51%	28%	21%	23%
Voter Registration (Nov 2016)	Total	21,641	20,310	14,013	16,651	18,835	91,450
	% Latino est.	5%	6%	7%	9%	8%	7%
	% Spanish-Surnamed	4%	5%	6%	8%	7%	6%
	% Asian-Surnamed	6%	8%	31%	15%	16%	14%
	% Filipino-Surnamed	1%	1%	2%	2%	2%	1%
	% NH White est.	87%	84%	55%	70%	71%	75%
	% NH Black	1%	1%	3%	3%	3%	2%
Voter Turnout (Nov 2016)	Total	17,639	16,605	10,931	13,312	15,044	73,533
	% Latino est.	4%	6%	7%	9%	8%	7%
	% Spanish-Surnamed	4%	5%	6%	8%	8%	6%
	% Asian-Surnamed	6%	8%	30%	14%	15%	13%
	% Filipino-Surnamed	1%	1%	2%	2%	2%	1%
	% NH White est.	88%	84%	56%	72%	72%	76%
	% NH Black	1%	1%	3%	3%	3%	2%
Voter Turnout (Nov 2014)	Total	11,311	10,107	4,828	7,414	7,779	41,439
	% Latino est.	4%	5%	7%	7%	6%	5%
	% Spanish-Surnamed	3%	5%	6%	6%	6%	5%
	% Asian-Surnamed	5%	6%	25%	11%	10%	10%
	% Filipino-Surnamed	1%	1%	2%	1%	1%	1%
	% NH White est.	90%	86%	61%	78%	79%	82%
	% NH Black est.	0%	1%	4%	2%	3%	2%
ACS Pop. Est.	Total	29,992	29,547	32,296	29,322	27,724	148,882
Age	age0-19	26%	30%	37%	28%	29%	30%
	age20-60	46%	47%	53%	56%	52%	51%
	age60plus	28%	24%	10%	16%	19%	19%
Immigration	immigrants	12%	15%	40%	30%	26%	25%
	naturalized	74%	69%	65%	59%	63%	65%
Language spoken at home	english	86%	84%	50%	63%	66%	70%
	spanish	4%	2%	3%	4%	5%	4%
	asian-lang	4%	7%	29%	19%	16%	15%
	other lang	6%	8%	18%	15%	13%	12%
Language Fluency	Speaks Eng. "Less than Very Well"	3%	4%	15%	11%	11%	9%
Education (among those age 25+)	hs-grad	30%	29%	26%	30%	36%	30%
	bachelor	42%	44%	39%	39%	38%	40%
	graduatedegree	27%	25%	32%	28%	23%	27%
Child in Household	child-under18	34%	41%	61%	41%	44%	44%
Pct of Pop. Age 16+	employed	56%	58%	66%	69%	62%	62%
Household Income	income 0-25k	6%	5%	6%	5%	7%	6%
	income 25-50k	9%	6%	7%	9%	9%	8%
	income 50-75k	9%	10%	8%	10%	8%	9%
	income 75-200k	37%	44%	42%	52%	49%	45%
	income 200k-plus	40%	36%	37%	25%	27%	33%
Housing Stats	single family	92%	94%	79%	69%	86%	84%
	multi-family	8%	6%	21%	31%	14%	16%
	rented	15%	12%	28%	33%	20%	22%
	owned	85%	88%	72%	67%	80%	78%
Total population data from the 2010 Decennial Census.							
Surname-based Voter Registration and Turnout data from the California Statewide Database.							
Latino voter registration and turnout data are Spanish-surname counts adjusted using Census Population Department undercount estimates. NH White and NH Black registration and turnout counts estimated by NDC. Citizen Voting Age Pop., Age, Immigration, and other demographics from the 2012-2016 American Community Survey and Special Tabulation 5-year data.							